

# NEO | SCIENCE™

Stay Ahead Of The Wellness Curve™



## Product Catalog 2024

(424) 552-1612

[info@neoscience.com](mailto:info@neoscience.com)

[neoscience.com](http://neoscience.com)



# NEO | SCIENCE™

Stay Ahead Of The Wellness Curve™

As the industry evolves, the demand for more cost-effective and user-friendly solutions is paramount. **Stay Ahead of the Wellness Curve™** with our cutting-edge light, cold, compression, and PEMF devices.

## Product Catalog 2024

### Table of Contents

NEO Light .....	3
NEO Luna .....	5
NEO Cool .....	6
NEO Flux .....	8
NEO O2 .....	9
Boa Max 2 .....	10
Who is NEO Science? .....	12
Health Technology at Home or on the Go .....	15



# NEO | LIGHT

Go beyond red light with 4 colors and 6 frequencies.  
Create an in-demand and touchless revenue stream.



Boost cellular function



Improve healing



Reduce oxidative stress



Reduce pain



Maintain skin health



Relax muscles



Even skin tone



Improve circulation

“We purchase the NEO bed in March 2023 and recouped out investment in under 6 months. The majority of our clients have added it to their recovery regime as they both see and feel the benefits.”

**Jim Karas**

Owner, Chicago Cryospa  
Lifestyle Expert and NY Times Bestselling Author



## NEO | LIGHT BED Data Sheet

### Size

Weight: 350 kg (771.6 lbs)

Dimension (L x W x H):

92.5 x 41.2 x 39.7 inches

### Product consists of

- **1 Base** (with embedded LEDs, fans and CPU)
- **1 Canopy** (with embedded LEDs, fans, and touch screen controller)
- **1 Variable foot fan** for comfort
- **6ft Power cord**
- **Accessories** including head rest and goggles



### Additional Specifications

#### Electrical Requirements

220-240V, 50/60Hz

30A dedicated circuit breaker

10-gauge wiring

NEMA L6 30R outlet or hard wiring

#### Power consumption

Total rated power : 6336W, 28.8A

Actual power : 3740 W, 21.25A

#### LEDs

31,680 (tripartite spectral diodes)

Pulse option and variable Hz

#### Programs

4 pre-set modes, fully customizable

#### Wavelengths

633 - Red

810 - NIR infrared

850 - NIR infrared

940 - NIR infrared

415 - Blue

532 - Green

#### User Specifications

Max Height : 7' 5"

Max Weight : 661 lb (300 Kg)

# NEO | LUNA

100% ELECTRIC COLD SAUNA

AVAILABLE JANUARY 2025



MADE IN  GERMANY

Exact specifications  
will be announced  
in January

Stay tuned for  
more details

The NEO Luna was designed with a focus on sustainability, safety, and performance. Utilizing the latest refrigeration technology from Germany, it employs natural refrigerants with a minimal environmental footprint and low Global Warming Potential (GWP). Unlike traditional options like R404A, which have a high GWP and significant environmental impact, our refrigerants provide a greener and safer cooling solution. Our machine delivers performance and body cooling efficiency comparable to the leading systems on the market today.

Reliability is another cornerstone of our design, which is why we partnered with a renowned German manufacturer. The NEO Luna features two independently operating cooling engines, which can run simultaneously to accelerate the cooling process or operate individually for routine use. This design reduces wear and tear, enhancing durability and reliability. Similar to the redundancy found in aircraft engines, our dual-engine system significantly reduces the risk of total system failure, offering superior assurance and dependability.

# NEO | COOL

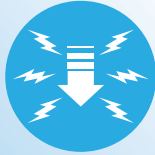
100% ELECTRIC LOCALIZED & FACIAL CRYO



SKIN HEALTH



INFLAMMATION



REDUCE PAIN



DECREASE SWELLING



HEALING



IMPROVE CIRCULATION



NEO Cool is the sole 100% electric device approved for the sought-after Cryofacial™ treatment, offering unparalleled cooling power for rejuvenation, improved skin-tone and a youthful glow.

# NEO | COOL Data Sheet

## Specifications

Weight: 55 kg (121.25 lbs)

Dimensions: 12.9 × 22.44 × 28.74 in (L × W × H)

Power Requirements: 110V (standard US outlet)

Temperature: -30°C

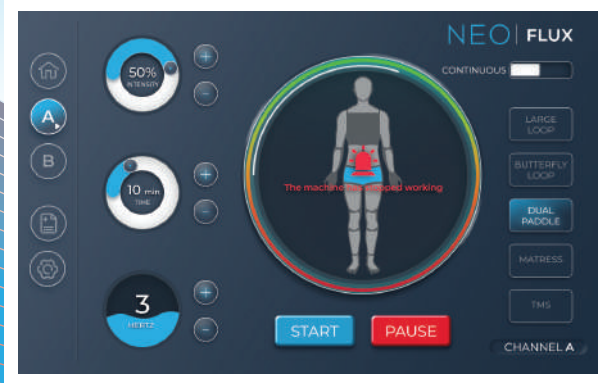
## Product consists of

- **1 Base** (with embedded fan and compressor)
- **1 Hose** (with pothook)
- **1 Strut Arm**
- **6ft Power cord**
- **Accessories** (target therapy cup)



# NEO | FLUX

COMING OCTOBER 2024



- Better circulation
- Improved oxygenation in tissue
- Enhanced cellular repair & recovery
- Improved immune system
- Pain reduction
- Better sleep
- Improved muscle relaxation
- Decreased inflammation and swelling

The NEO Flux is an advanced PEMF device designed for versatile and customizable therapy. With dual channels, it allows two attachments to run simultaneously, each with adjustable intensity and frequency. Offering power settings from 1,000 to 10,000 gauss (0.1-1 Tesla), it delivers targeted, high-performance treatments. The system comes with multiple attachments, including paddles, rings, and a pad, making it ideal for a range of wellness applications. Ultra-portable and easy to use, the NEO Flux connects to a standard 110V outlet, ensuring convenience and flexibility for any setting.



# NEO | O2

## Hyperbaric Chamber NEO O2 (1.5ATA)

### All-In-One Control Unit (Air Compressor + Oxygen Concentrator 10L + AC)



### Specifications | Model O234



#### Chamber

Outer Shell	: Stainless Steel
Transparent Door	: Polycarbonate
Size (L x W x H)	: 88 x 34 x 34 in
Pressure	: 1.5 ATA (50 kPa)
Weight	: 353 lbs / 160,12 kg
Control System	: LCD Touch Screen



#### Control Unit

Combination of air compressor, oxygen concentrator, and air conditioner

Weight	: 209,44 lbs / 95 kg	AC Air Speed	: Adjustable
Size (L x W x H)	: 68 x 16 x 29 in / 170 x 40 x 72 cm	Voltage	: 110V 60Hz / 220V 50Hz
Air flow	: 80 L/min	Power	: 1800 W
Oxygen flow	: 1- 10 L/min (adjustable)	Chamber Noise	: ≤65 db
AC Temperature Range	: 2 - 10°	Capacity	: 1

# BOA Max 2

for business and home

## Lymphatic Drainage Massage Suit for Health, Wellness and Beauty



-  Immune boosting
-  Detoxification
-  Improve circulation
-  Reduce inflammation
-  Improve skin health
-  Relaxation
-  Supports recovery
-  Release excess fluids

Elevate your facility's offerings with our compression therapy suit - a perfect complement to body contouring and IV therapy services. Unlock increased revenue streams without the need of additional labor, maximizing profitability and client satisfaction!

# BOA Max 2 Data Sheet

## Specifications

Weight: 13kg (28.66 lbs)

Dimensions: 16.5 × 13.5 × 20.0 in

Power Requirements: 110V (standard US outlet)

## Product consists of

- 1 Suit (with top and bottom)
- 1 Computer System Controller
- 6ft Power cord

## Additional Specifications

### Programs

Over 20 programs including ipolisis & Cavitation, Sports Massage, Relaxation, Slimming and Cellulite, Lymphatic drainage

### Pressure

20 up to 140 mmHg



# Stand Out With Leading Edge Technology

When you add light therapy, cryotherapy, and lymphatic drainage to your services, you create sustainable, touchless revenue streams for your business.

As wellness business owners ourselves, we help you:

- ✓ Determine which equipment is right for your business or home
- ✓ Get reliable, effective, machine(s) at a competitive price
- ✓ Start using your new product right away with white-glove delivery and easy-to-use preset modes
- ✓ Market your new service to make your new offering profitable as soon as possible

“Having owned a wellness center for over a decade, I began when there were not many options to choose from. Amidst numerous trials and errors, I stumbled upon Robin (Founder) and Neo Science. The unparalleled blend of affordability, excellence, and the personal connection fostered by Robin and his team exceeded all my previous experiences as a business owner. I was able to fully outfit my center with one company which streamlined and simplified the process. Because of Robin’s brilliance, coupled with his unwavering dedication to each customer’s success, I continued working with him after leaving the retail space. Now, I advise business owners to help them grow or start from the ground up.”

**- Lana Sargent**



# NEO | SCIENCE™

Stay Ahead Of The Wellness Curve™

## Position Yourself As An Industry Leader

With any of our health optimization products



NEO | LIGHT

NEO | COOL

NEO | LUNA

NEO | FLUX

NEO | O2

BOA Max 2

 Leading Edge Technology

 Unlock New Revenue Streams

 Easy Delivery & Setup

## Choose the Right Equipment

Get the Max Return Quickly



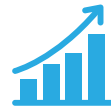
### Jump on a quick call and get a quote

Tell us about your goals, and we'll ask a few questions.



### Confidently choose the light bed best suited for you

Get started right away with white-glove delivery and simple setup.



### Unlock a new revenue stream & grow your business

Provide the red light therapy services premier clients are looking for.

**Don't wait another week.  
Get the latest technology to attract and retain top clients.**

**CALL FOR A QUOTE**



(424) 552-1612

info@neoscience.com

neoscience.com

# NEO | SCIENCE™

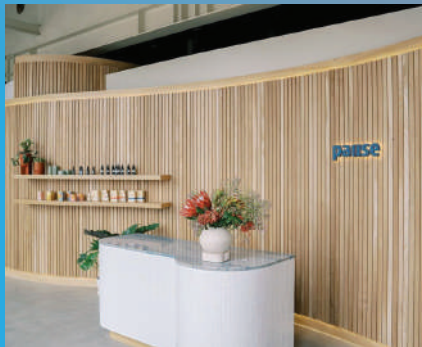
Stay Ahead Of The Wellness Curve™

## A Team You Can Trust We are pioneers in wellness technology

For over 15 years we have pursued the highest quality, leading edge technology from around the world and brought it to America. Our founder, Robin Kuehne, was the pioneer in bringing cryotherapy to the States in 2008 and continues to research and engineer equipment with the business owner in mind. Speak directly with our team, get your questions answered, and feel confident investing in equipment that will help you attract and retain top tier clients.



Paris Hilton  
NEO Light Owner



Pause Studio  
Franchise



Partner of Carillon Hotel  
(Recognized internationally  
for its touches wellness spa)

### Trusted by Premier Wellness Centers



(424) 552-1612

info@neoscience.com

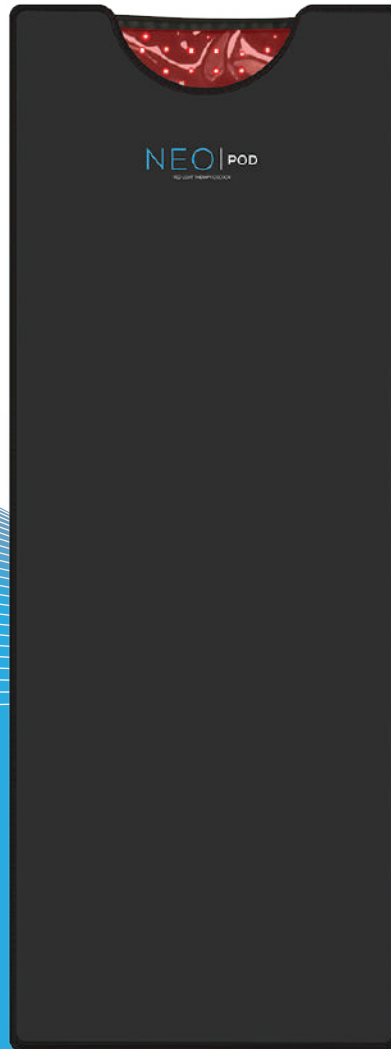
neoscience.com



# Health Technology at Home or on the Go

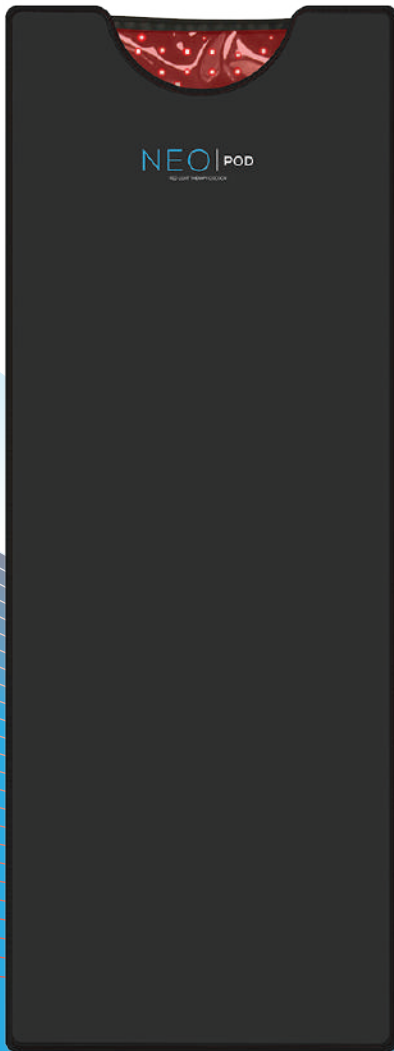
NEO | POD

Red Light Therapy Cocoon



Transform your home into a haven of wellness with our sought-after portable home devices. Engineered for personal use, these cutting-edge health optimization technologies empower you to enhance your wellbeing seamlessly—whether you're watching TV, meditating, listening to a podcast, or even working remotely.

# NEO | POD



The NEO | POD is a portable whole body red light therapy device from NEO | Science. It is ideal for home use and traveling practitioners.

This small yet powerful device can deliver treatments (25j/cm<sup>2</sup> dose) in 30 minute increments.



- Reduce inflammation
- Increase ATP production
- Anti-aging
- Boost cellular function
- Reduce oxidative stress
- Maintain skin health

Experience the rejuvenating power of red and infrared light therapy from the comfort of your home with The NEO | POD, our portable whole-body red light therapy device. Harness the skin-revitalizing benefits of red light for anti-aging, while the penetrating infrared light stimulates ATP production, enhancing cellular function throughout your body.