

NEO | SCIENCE

Stay Ahead of the Wellness Curve



Product Catalog 2024

(424) 552-1612

info@neoscience.com

neoscience.com



NEO | SCIENCE

Stay Ahead of the Wellness Curve

As the industry evolves, the demand for more cost-effective and user-friendly solutions is paramount. **Stay Ahead of the Wellness Curve™** with our cutting-edge light, cold, compression, and PEMF devices.

Product Catalog 2024

Table of Contents

NEO Light	3
NEO Luna	5
NEO Cool	7
NEO Flux	9
Boa Max 2	10
Who is NEO Science?	12
Home Health Technologies	15



NEO | LIGHT

Go beyond red light with 4 colors and 6 frequencies.
Create an in-demand and touchless revenue stream.



Boost cellular function



Reduce oxidative stress



Maintain skin health



Even skin tone



Improve healing



Reduce pain



Relax muscles



Improve circulation

"We purchase the NEO bed in March 2023 and recouped out investment in under 6 months. The majority of our clients have added it to their recovery regime as they both see and feel the benefits."

Jim Karas

Owner, Chicago Cryospa
Lifestyle Expert and NY Times Bestselling Author



NEO | LIGHT BED Data Sheet

Size

Weight: 350 kg (771.6 lbs)

Dimension (L × W × H):

92.5 × 41.2 × 39.7 inches

Product consists of

- **1 Base** (with embedded LEDs, fans and CPU)
- **1 Canopy** (with embedded LEDs, fans, and touch screen controller)
- **1 Variable foot fan** for comfort
- **6ft Power cord**
- **Accessories** including head rest and goggles



Additional Specifications

Electrical Requirements

220-240V, 50/60Hz

30A dedicated circuit breaker

10-gauge wiring

NEMA L6 30R outlet or hard wiring

Power consumption

Total rated power : 6336W, 28.8A

Actual power : 3740 W, 21.25A

LEDs

31,680 (tripartite spectral diodes)

Pulse option and variable Hz

Programs

4 pre-set modes, fully customizable

Wavelengths

633 - Red

810 - NIR infrared

850 - NIR infrared

940 - NIR infrared

415 - Blue

532 - Green

User Specifications

Max Height : 7' 5"

Max Weight : 661 lb (300 Kg)

NEO | LUNA

100% ELECTRIC COLD SAUNA

COMING SOON



MADE IN
USA

UL LISTED

The Luna Difference

- **Seamless Installation**
Our equipment is designed for effortless setup and relocation.
- **Premium Technology for Nearly Half the Cost**
Experience cutting-edge performance without the premium price tag.
- **Autonomous Design**
A completely self-contained unit requiring no external plumbing.
- **Simple 208V Power Requirement**
Efficiently powered with standard 208V.
- **Proudly Made In The USA and UL Listed**
Commitment to quality and safety, with 100% American-made craftsmanship.
- **Established Excellence Since 1982**
A tradition of quality from a manufacturer with over four decades in the industry.
- **24/7 Operational Capability**
Designed for round-the-clock reliability.
- **Spaciously Designed Interior**
Comfort meets capacity in a design that's both user-friendly and accommodating.
- **Unmatched Low Operating Costs**
Optimize your operations with significantly reduced expenses.
- **Continuous Operation with No Interruptions**
Forget about dry cycles or daily shutdowns.
- **Vortex Cooling Technology**
Ensures a consistently even distribution of cold for optimal performance.

NEO | LUNA Data Sheet

Size

Weight: 680 kg (1500 lbs)

Dimension (L x W x H):

5' 6" x 5' 6" x 9' 5" feet

Product consists of

- Insulated Cryogenic chamber
- Refrigeration System
- PLC & touch screen control
- Heated glass door
- Entertainment system (audible timer)



Additional Specifications

Electrical Requirements

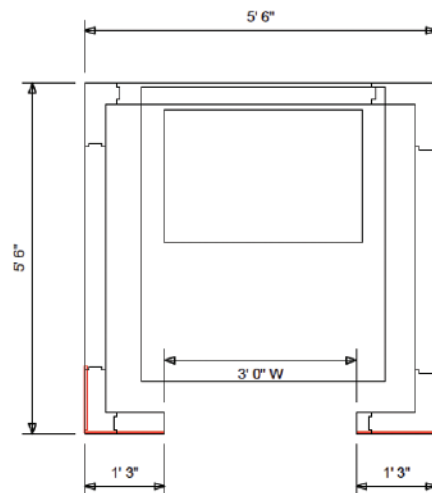
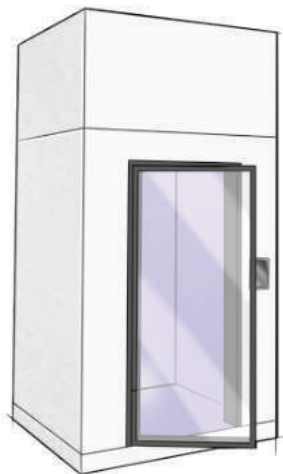
30-Amp dedicated circuit breaker

125/250 Volt

NEMA L14-30p 4-wire Grounding

Industrial Locking Plug

10-gauge wiring



Specs

- 20Amp 208-230VAC 2-pole circuit (for refrigeration unit). #12 awg wire with the length being not more than 100ft. Max is 25Amp 208-230VAC circuit with #10awg wire. 6-20P NEMA Plug comes on the unit.
- 20 amp 115VAC circuit with #12awg wire (control panel)
- Door size 36" x 72" (left or right hinged), heated glass.

NEO | COOL

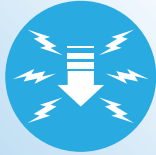
100% ELECTRIC LOCALIZED & FACIAL CRYO



SKIN HEALTH



INFLAMMATION



REDUCE PAIN



DECREASE SWELLING



HEALING



IMPROVE CIRCULATION



NEO Cool is the sole 100% electric device approved for the sought-after Cryofacial™ treatment, offering unparalleled cooling power for rejuvenation, improved skin-tone and a youthful glow.

NEO | COOL Data Sheet

Specifications

Weight: 55 kg (121.25 lbs)

Dimensions: 12.9 × 22.44 × 28.74 in (L × W × H)

Power Requirements: 110V (standard US outlet)

Temperature: -30°C

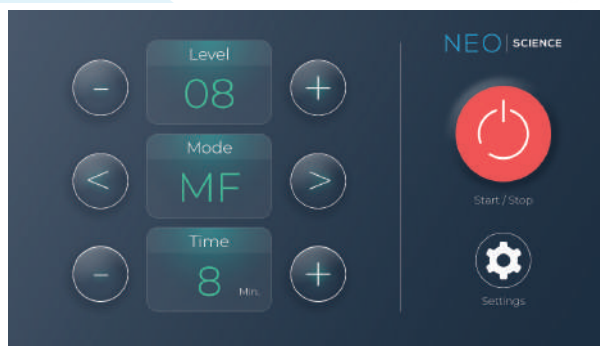
Product consists of

- **1 Base** (with embedded fan and compressor)
- **1 Hose** (with pothook)
- **1 Strut Arm**
- **6ft Power cord**
- **Accessories** (target therapy cup)



NEO | FLUX

COMING MAY 2024



- Better circulation
- Improved oxygenation in tissue
- Enhanced cellular repair & recovery
- Improved immune system
- Pain reduction
- Better sleep
- Improved muscle relaxation
- Decreased inflammation and swelling

Magnetic flux is a measurement of the total magnetic field which passes through a given area. It is a useful tool for helping describe the effects of the magnetic force on something occupying a given area.

BOA Max 2

for business and home

Lymphatic Drainage Massage Suit for Health, Wellness and Beauty



-  Immune boosting
-  Detoxification
-  Improve circulation
-  Reduce inflammation
-  Improve skin health
-  Relaxation
-  Supports recovery
-  Release excess fluids

Elevate your facility's offerings with our compression therapy suit - a perfect complement to body contouring and IV therapy services. Unlock increased revenue streams without the need of additional labor, maximizing profitability and client satisfaction!

BOA Max 2 Data Sheet

Specifications

Weight: 13kg (28.66 lbs)

Dimensions: 16.5 × 13.5 x 20.0 in

Power Requirements: 110V (standard US outlet)

Product consists of

- 1 Suit (with top and bottom)
- 1 Computer System Controller
- 6ft Power cord

Additional Specifications

Programs

Over 20 programs including ipolisis & Cavitation, Sports Massage, Relaxation, Slimming and Cellulite, Lymphatic drainage

Pressure

20 up to 140 mmHg



Stand Out With Leading Edge Technology

When you add light therapy, cryotherapy, and lymphatic drainage to your services, you create sustainable, touchless revenue streams for your business.

As wellness business owners ourselves, we help you:

- ✓ Determine which equipment is right for your business or home
- ✓ Get reliable, effective, machine(s) at a competitive price
- ✓ Start using your new product right away with white-glove delivery and easy-to-use preset modes
- ✓ Market your new service to make your new offering profitable as soon as possible

“Having owned a wellness center for over a decade, I began when there were not many options to choose from. Amidst numerous trials and errors, I stumbled upon Robin (Founder) and Neo Science. The unparalleled blend of affordability, excellence, and the personal connection fostered by Robin and his team exceeded all my previous experiences as a business owner. I was able to fully outfit my center with one company which streamlined and simplified the process. Because of Robin's brilliance, coupled with his unwavering dedication to each customer's success, I continued working with him after leaving the retail space. Now, I advise business owners to help them grow or start from the ground up.”

- Lana Sargent



NEO | SCIENCE

Stay Ahead of the Wellness Curve

Position Yourself As An Industry Leader

With any of our health optimization products



NEO | LIGHT

NEO | COOL

NEO | LUNA

BOA Max 2

 Leading Edge Technology

 Unlock New Revenue Streams

 Easy Delivery & Setup

Choose the Right Equipment

Get the Max Return Quickly



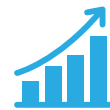
Jump on a quick call and get a quote

Tell us about your goals, and we'll ask a few questions.



Confidently choose the light bed best suited for you

Get started right away with white-glove delivery and simple setup.



Unlock a new revenue stream & grow your business

Provide the red light therapy services premier clients are looking for.

**Don't wait another week.
Get the latest technology to attract and retain top clients.**

CALL FOR A QUOTE



(424) 552-1612

info@neoscience.com

neoscience.com

NEO | SCIENCE

Stay Ahead of the Wellness Curve

A Team You Can Trust We are pioneers in wellness technology

For over 15 years we have pursued the highest quality, leading edge technology from around the world and brought it to America. Our founder, Robin Kuehne, was the pioneer in bringing cryotherapy to the States in 2008 and continues to research and engineer equipment with the business owner in mind. Speak directly with our team, get your questions answered, and feel confident investing in equipment that will help you attract and retain top tier clients.



Paris Hilton
NEO Light Owner



Pause Studio
Franchise



Partner of Carillon Hotel
(Recognized internationally
for its touches wellness spa)

Trusted by Premier Wellness Centers



(424) 552-1612

info@neoscience.com

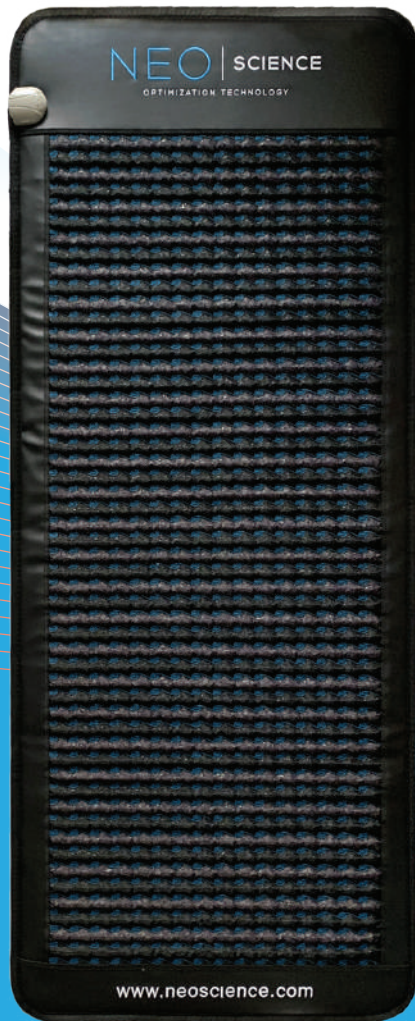
neoscience.com



Popular Home Health Technologies

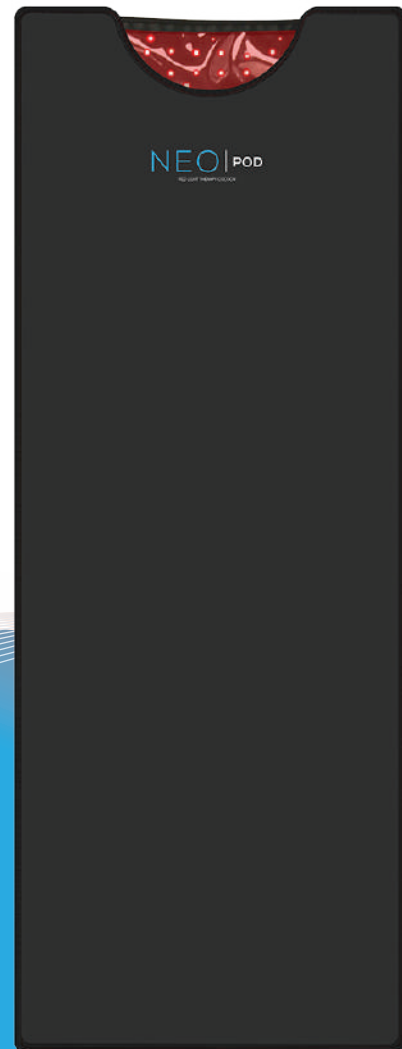
NEO | PAD

PEMF Mat



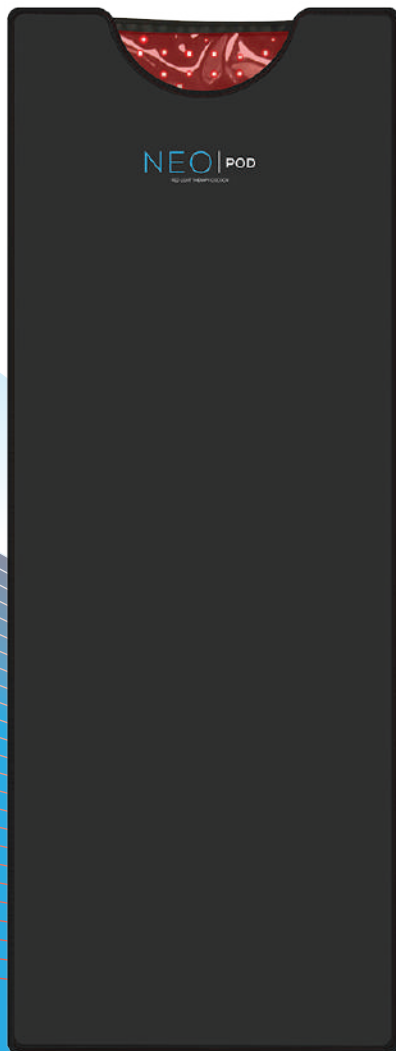
NEO | POD

Red Light Therapy Cocoon



Transform your home into a haven of wellness with our sought-after portable home devices. Engineered for personal use, these cutting-edge health optimization technologies empower you to enhance your wellbeing seamlessly—whether you're watching TV, meditating, listening to a podcast, or even working remotely.

NEO | POD



The NEO | POD is a portable whole body red light therapy device from NEO | Science. It is ideal for home use and traveling practitioners. This small yet powerful device can deliver treatments (25j/cm² dose) in 30 minute increments.



- Reduce inflammation
- Increase ATP production
- Anti-aging
- Boost cellular function
- Reduce oxidative stress
- Maintain skin health

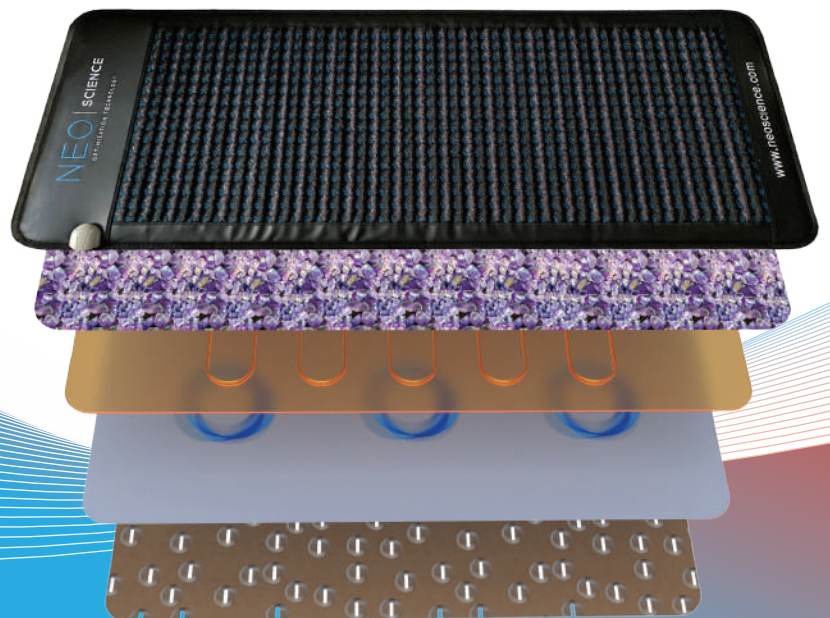
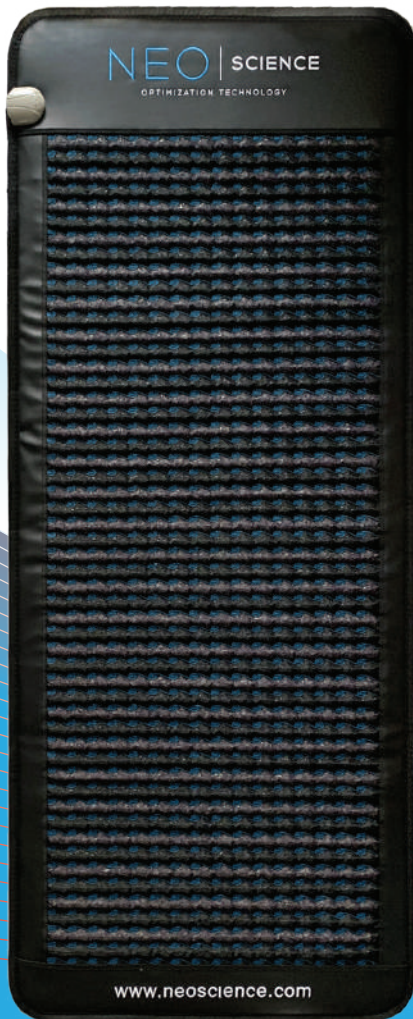
Experience the rejuvenating power of red and infrared light therapy from the comfort of your home with The NEO | POD, our portable whole-body red light therapy device. Harness the skin-revitalizing benefits of red light for anti-aging, while the penetrating infrared light stimulates ATP production, enhancing cellular function throughout your body.

NEO | PAD

The NEO | Pad is an Infrared PEMF mat.

Beneath the non toxic fabric and leather covering you find layers of crystals, infrared heat, PEMF, and a charcoal layer.

Ideal to use for example during meditation, relaxation, sleep (or power naps), stretch, massage, physical therapy, and Yoga practice.



- Reduction of stress levels
- Increase energy
- Better, deeper sleep
- Improved circulation
- Faster muscle recovery
- Pain reduction

The NEO | Pad can heat up to 70C, during which presses the gemstone layers emit a stream of negative ions, which you can think of "airborne antioxidants". The heat offers general muscle relaxation. The mild pulsating magnetic field that is emitted (PEMF) relaxes the blood vessels and smallest capillaries in the body to improve circulation.